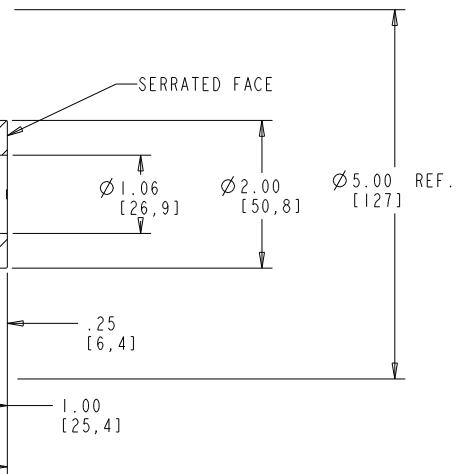


ITEM	QTY	ITEM NO	DRAWING	PART NAME	MATERIAL
1	2	58393		1 FLG PROTECTOR	POLYETHYLENE
2	1	58147	9205	BEARING RING	AMPCO ALUM BRONZE
3	1	21474	49511	BODY SUB	A105
4	1	30201	40504	BONNET	A105
5	4	50221	60684A	FINISHED HEX NUT	F594 304SS
6	1	55007	45706C	GASKET	304/GRAFOIL
7	1	32623	40508	GATE	A743 GR CA15
8	1	35016	36891	HANDWHEEL	MALLEABLE IRON
9	1	50006	17964	HANDWHEEL NUT	A105
10	4	50038	45417C	HEX HD BOLT	A193 GR B7
11	1	40671	38233	NAME PLATE (GREEN)	ALUMINUM
12	1	55176		PACKING CARTRIDGE	FLEXIBLE GRAPHITE
13	1	34072	35047	PACKING GLAND	A105
14	2	32114	40507	SEAT RING	A479 T410 HF
15	1	32794	40506	STEM	A479 TYPE 410
16	2	50129	21912	STUD BOLT	F593 304SS
17	1	58452		TACK WELD	(RMPWPS555)
18	1	34013	35045	YOKE	A105
19	1	58098	17961	YOKE NUT	A582 TYPE 416




NOTE:
PRESS SEATS PER RMPVFSP024
GATE VALVE TO BE TESTED PER API-598 PER RMPVLT003

X.XX Inches [XX,X] MM	
WEIGHT	17.6 LBS 7.97 Kg
Cv FACTOR	20.3

CNS	57282
REV	11
BY	R. Jackson
DATE	8-21-2003
DWN BY	JOE CECIL
CHK BY	S.R.
RVD BY	
DATE	5-6-75
SCALE	0.875

SERIES No:	373-06
ITEM No:	20011
RATING: 1480 PSI • 100 F	SPECS: API 602/ASME B16.34
BODY WLD-A105 SR SEAT HF DISC 13CR STEM 13CR	


FLOWSERVE Vogt Valves
 SULPHUR SPRINGS, TEXAS, USA
 1 GATE VALVE - FORGED STEEL
 - OS&Y - BOLTED BONNET - BOLTED GLAND -
 RENEWABLE SEATS - LOOSE SLOTTED GATE -
 INERTIA WELD RAISED FACE FLANGES -CLASS 600
49514-9