

Introducing McDonnell & Miller's New and Improved **Series 750 Low Water Cut-Offs** **For Steam and Hot Water Boilers**

The Series 750 control is a conductance type control that provides continuous protection against low water conditions. Upgrades include increased probe sensitivity which prevents nuisance shutdowns, improved user-friendly diagnostic LED's, and CSD-1 Standard compliance. The new 750P-MT-120 and 750P-MT-U-120 models include probes for direct mounting to chassis.

Typical Applications

- Primary control on commercial hot water boilers
- Secondary control (manual reset models) on commercial steam boilers

Features

- Green LED power indicating light
- Red LED low water indicating light
- 20,000 ohm sensitivity
- Test switch on all models
- Knockouts on rear of chassis for direct mounting
- Manual reset models meet the requirements of **ASME Code CSD-1**. If the control is in a low water condition (water off probe) when there is an interruption of power, the control will remain in a low water condition when power is restored. The reset button will need to be pressed when the water level is restored to a level above the probe.

Benefits

- Fewer nuisance shutdowns
- Easy system troubleshooting
- CSD-1 standard compliant

Specifications

UL, CSA and FM listed and approved

NEMA 1 enclosure

Maximum ambient temperature 120°F (49°C)

Maximum steam pressure

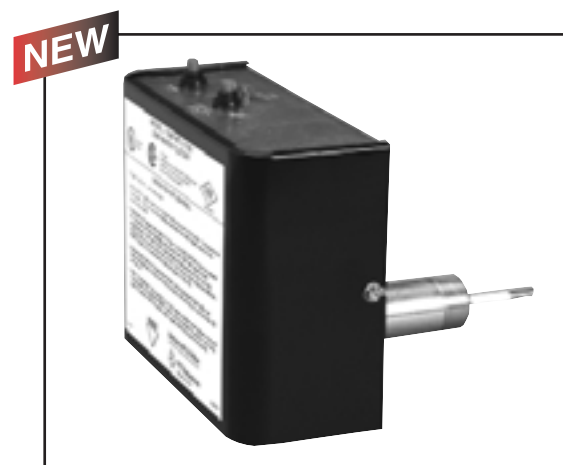
- 15 psi using 'P' probe or RS-1-LP remote sensor
- 250 psi using RS-1-BR-1 remote sensor

Maximum water pressure

- 160 psi using 'P' probe or RS-1-LP remote sensor
- 250 psi using RS-1-BR-1 remote sensor



Series 750 Control Unit



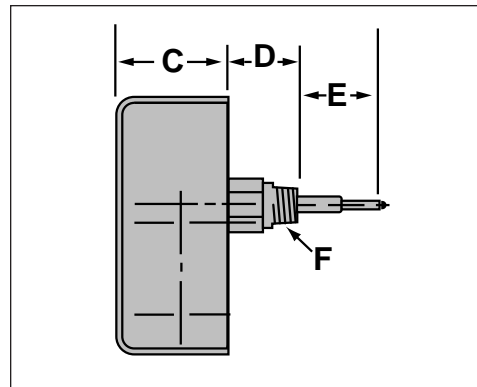
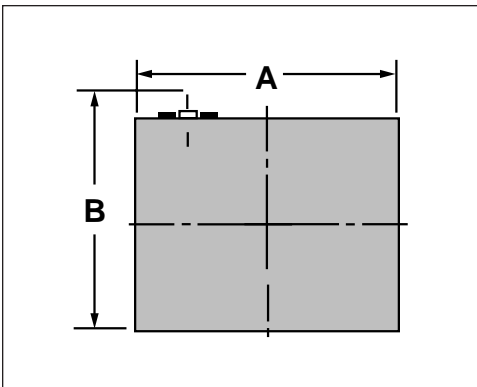
750P-MT-120
750P-MT-U-120

Electrical Ratings

Voltage	Motor Switch Rating (Amperes)		Pilot Duty
	Full Load	Locked Rotor	
120 VAC	7.2	43.2	125 VA at 120 or 240 VAC 50 or 60 Hz
240 VAC	3.6	21.6	

Dimensions, in. (mm)

A	B	C	D		E		F NPT
			Std.	U	Std.	U	
6 ³ / ₈ (162)	5 ¹ / ₈ (130)	2 ⁹ / ₁₆ (65)	1 ⁹ / ₁₆ (40)	3 ¹ / ₁₆ (78)	2 ¹ / ₈ (54)	1 ⁹ / ₁₆ (40)	³ / ₄



Ordering Information

Model Number	Part Number	Description	Weight lbs. (kg)
750-T-120	176206	Auto reset	2 (.9)
750-MT-120	176207	Manual reset	2 (.9)
750P-MT-120	176234	Manual reset w/PA-800 probe	2.5 (1.1)
750P-MT-U-120	176214	Manual reset w/PA-800-U probe	2.5 (1.1)

McDonnell & Miller



3500 N. Spaulding Avenue
Chicago, Illinois 60618
tel: 773 267-1600
fax: 773 267-0991
www.mcdonnellmiller.com

©2002 ITT Industries Inc.
Printed in U.S.A. 7-02